

THE RESIDENCES AT  
**LEMOYNE MANOR**

629 OLD LIVERPOOL ROAD  
LIVERPOOL, NY 13088

315-445-8990



**66 MODERN LUXURY APARTMENTS!**



**BRAND-NEW MIXED-USE LUXURY DEVELOPMENT**

**RESIDENTIAL: - RENTAL RATES STARTING AT \$2,400 PER MONTH**

**- Garage Parking**

**Apartments Ranging from 1,100 to 1,250 Square Feet**

- ❖ 66 Apartments in Elevator Equipped Buildings! 1<sup>st</sup>, 2<sup>nd</sup> and 3<sup>rd</sup> Floor Options
- ❖ Majority 2 Bedroom/2 Bathroom Apartments With a Mix of Large 2 Bedroom/1 Bathroom Layouts
- ❖ All Units Have Balconies
- ❖ Lake Views From Many of the Units
- ❖ ADA Adaptable

**Stainless Steel Appliances, Granite Countertops, Custom Cabinetry, LED Lighting, Elevator, Community Room, Workout Facility, Garages, and More!**

No representation, warranty, or guarantee, expressed or implied or by operation of law, is made as to the accuracy, reliability, or completeness of this information. This material is submitted subject to errors, omissions, changes, prior sales or withdrawals without notice.

David C. Muraco  
Office: (315) 445-8990  
Empire Management of CNY, Inc.  
112 S Burdick St. Fayetteville, NY 13066

**Empire  
Mgt. Co.**

Residential Leasing  
Office: (315) 445-8990  
Email: [dcmuraco@empiremgtco.com](mailto:dcmuraco@empiremgtco.com)  
[www.empiremgtco.com](http://www.empiremgtco.com)

# NOW LEASING!

## 66 MODERN LUXURY APARTMENTS

CALL US AT 315-445-8990 OR EMAIL [DCMURACO@EMPIREMGT.CO.COM](mailto:DCMURACO@EMPIREMGT.CO.COM)

### Property Highlights Continued:

#### ❖ Shopping Centers

Shoppers will appreciate The Residences at LeMoyne Manor Apartments proximity to Liverpool Plaza, Old Liverpool, and Lakeshore Drive-In Shopping Plaza. Liverpool Plaza is 0.3 miles away, and Old Liverpool is within a 6-minute walk.

#### ❖ Parks and Recreation

Recreational activities near The Residences at LeMoyne Manor Apartments are plentiful. Discover 3 parks within 4.4 miles, including Erie Canal Museum, Rubenstein Museum of Science & Technology, and Rosamond Gifford Zoo.

#### ❖ Airports

Living in Liverpool provides easy access to Syracuse Hancock International, located just 11 minutes from The Residences at LeMoyne Manor Apartments.



No representation, warranty, or guarantee, expressed or implied or by operation of law, is made as to the accuracy, reliability, or completeness of this information. This material is submitted subject to errors, omissions, changes, prior sales or withdrawals without notice.

David C. Muraco  
Office: (315) 445-8990  
Empire Management of CNY, Inc.  
112 S Burdick St. Fayetteville, NY 13066

**Empire**  
Mgt. Co.

Residential Leasing  
Office: (315) 445-8990  
Email: [dcmuraco@empiremgtco.com](mailto:dcmuraco@empiremgtco.com)  
[www.empiremgtco.com](http://www.empiremgtco.com)



**NOW LEASING!**

## **66 MODERN LUXURY APARTMENTS**

**CALL US AT 315-445-8990 OR EMAIL [DCMURACO@EMPIREMGT.CO.COM](mailto:DCMURACO@EMPIREMGT.CO.COM)**

### **Property Highlights Continued:**

#### **Schools**

- ❖ **Chestnut Hill Elementary & Middle School – 1.1 miles**
- ❖ **Donlin Drive Elementary – 2.4 miles**
- ❖ **Liverpool Highschool – 5.3 miles**

**\*\*Sidewalks will be newly installed on our side of Old Liverpool Road providing connection to adjacent properties and will tie into Loop the Lake Trail on Onondaga Lake Parkway.\*\***



No representation, warranty, or guarantee, expressed or implied or by operation of law, is made as to the accuracy, reliability, or completeness of this information. This material is submitted subject to errors, omissions, changes, prior sales or withdrawals without notice.

David C. Muraco  
Office: (315) 445-8990  
Empire Management of CNY, Inc.  
112 S Burdick St. Fayetteville, NY 13066

**Empire  
Mgt. Co.**

Residential Leasing  
Office: (315) 445-8990  
Email: [dcmuraco@empiremgtco.com](mailto:dcmuraco@empiremgtco.com)  
[www.empiremgtco.com](http://www.empiremgtco.com)

# MODERN LUXURY COMMUNITY

**BUILDING 1:** OPEN NOW! (MIXED USE BUILDING)

**BUILDING 2:** OPEN NOW!

**BUILDING 3:** OPEN NOW!

**BUILDING 4:** OPEN NOW!

ONONDAGA LAKE VIEWS

Commercial  
MU- Building 1

Building 4

Building 3

Building 2

OLD LIVERPOOL ROAD

## REAR PATIO/DECK OF MIXED USE BUILDING

David C. Muraco  
Office: (315) 445-8990  
Empire Management of CNY, Inc.  
112 S Burdick St. Fayetteville, NY 13066

**Empire**  
Mgt. Co.

Residential Leasing  
Office: (315) 445-8990  
Email: [dcmuraco@empiremgtco.com](mailto:dcmuraco@empiremgtco.com)  
[www.empiremgtco.com](http://www.empiremgtco.com)



# EXTERIOR PHOTOGRAPHS

MIXED USE BUILDING  
12 APARTMENTS (FLOORS 2 & 3)  
2 RETAIL SPACES LEFT AND RIGHT OF MAIN ENTRANCE



## RESIDENTIAL BUILDING

18 APARTMENTS ( 6 PER FLOOR)



David C. Muraco  
Office: (315) 445-8990  
Empire Management of CNY, Inc.  
112 S Burdick St. Fayetteville, NY 13066

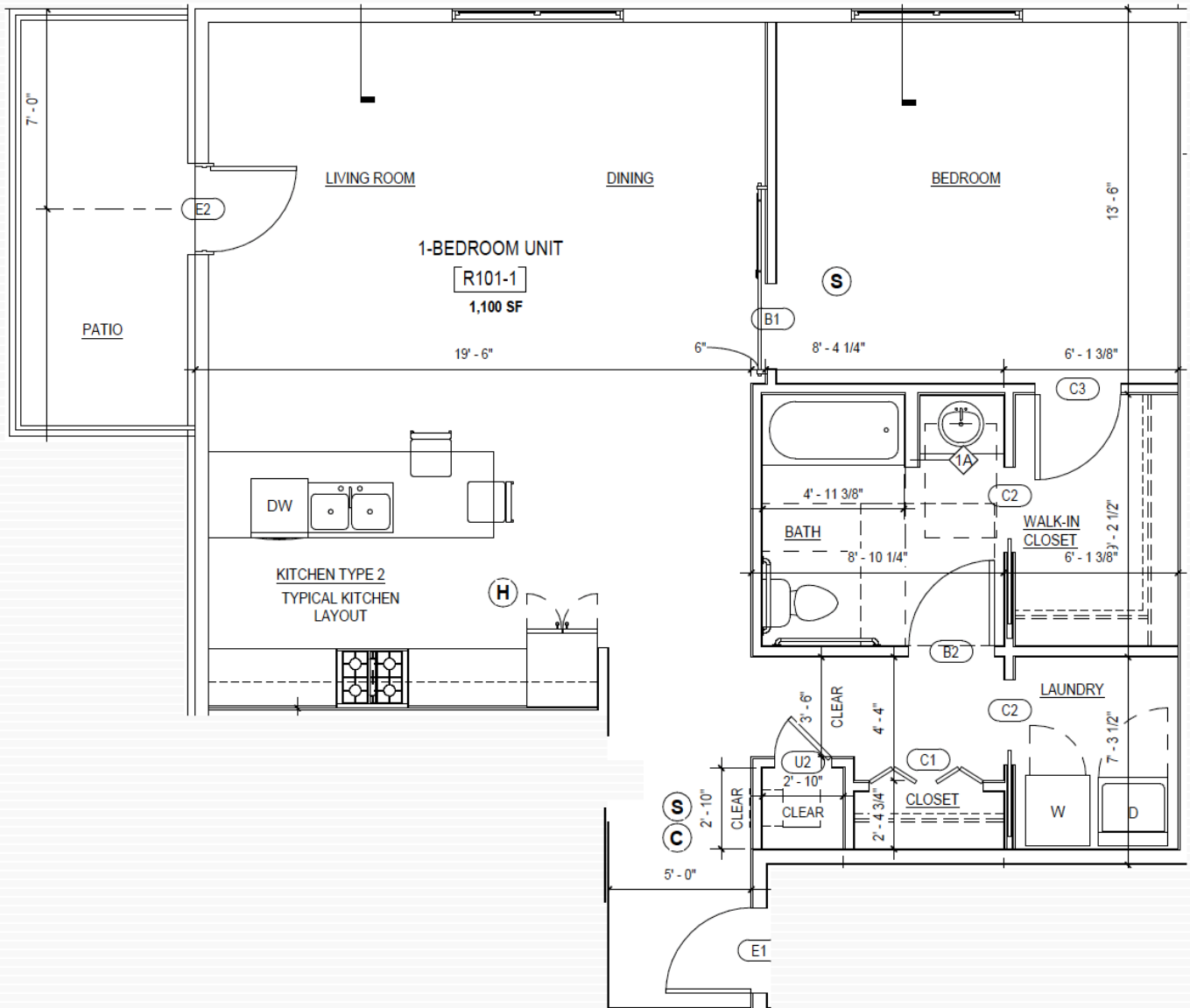
**Empire**  
Mgt. Co.

Residential Leasing  
Office: (315) 445-8990  
Email: [dcmuraco@empiremgtco.com](mailto:dcmuraco@empiremgtco.com)  
[www.empiremgtco.com](http://www.empiremgtco.com)

# INTERIOR APARTMENT LAYOUTS

CALL 315-445-8990 TO RESERVE YOUR  
APARTMENT TODAY!

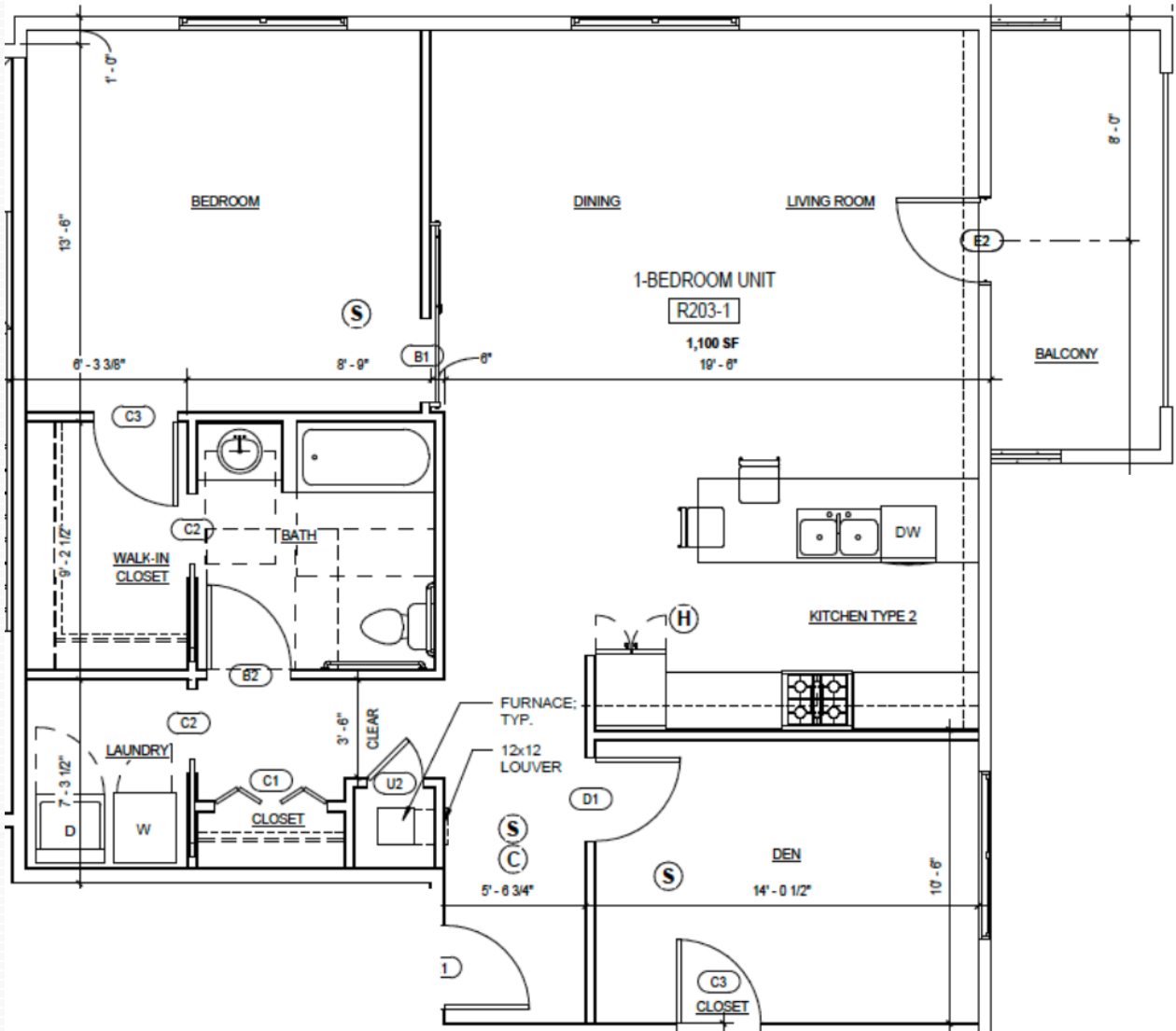
## 1 Bedroom / 1 Bathroom Floor Plan



# INTERIOR APARTMENT LAYOUTS

CALL 315-445-8990 TO RESERVE YOUR  
APARTMENT TODAY!

## 2 Bedroom / 1 Bathroom Floor Plan



CALL 315-445-8990 TO RESERVE YOUR  
APARTMENT TODAY!

**2-BEDROOM UNIT**  
R102-1  
1,200 SF

**Rooms and Dimensions:**

- BEDROOM:** 13'-0" x 10'-5"
- LIVING ROOM:** 14'-8" x 13'-0"
- DINING:** 14'-8" x 8'-0 1/4"
- KITCHEN:** 11'-0" x 8'-0 1/4"
- BEDROOM:** 12'-0" x 8'-6 3/4"
- BATH:** 5'-0" x 7'-0"
- UTILITY:** 17'-0" x 8'-0"
- LAUNDRY:** 5'-0" x 7'-0"
- PANTRY:** 5'-0" x 7'-0"
- BATH:** 5'-0" x 7'-0"
- WALK-IN CLOSET:** 5'-0" x 7'-0"
- WALK-IN CLOSET:** 5'-0" x 7'-0"
- CLOSET:** 5'-0" x 7'-0"
- PATIO:** 10'-0" x 10'-0"

**Architectural Symbols and Notes:**

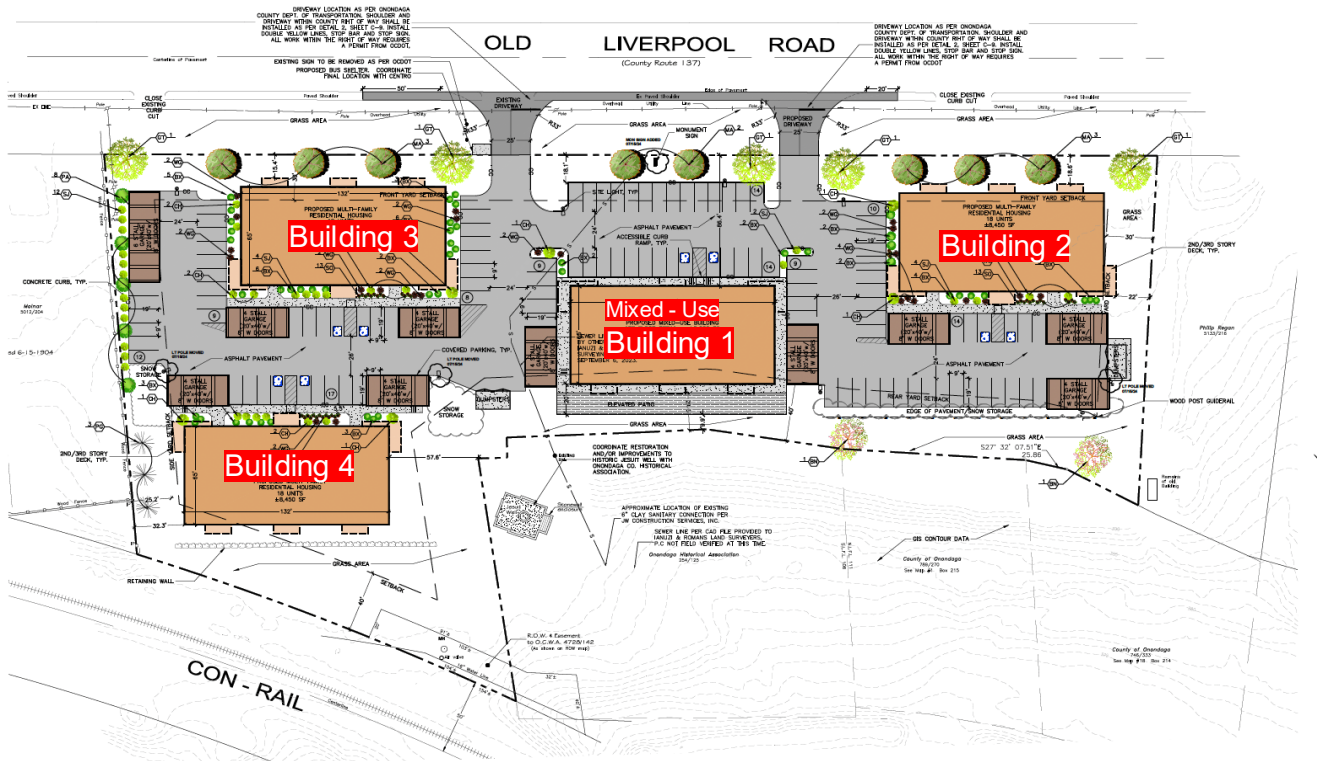
- DOORS:** D1, D2, D3, D4, D5, D6, D7, D8, D9, D10, D11, D12, D13, D14, D15, D16, D17, D18, D19, D20, D21, D22, D23, D24, D25, D26, D27, D28, D29, D30, D31, D32, D33, D34, D35, D36, D37, D38, D39, D40, D41, D42, D43, D44, D45, D46, D47, D48, D49, D50, D51, D52, D53, D54, D55, D56, D57, D58, D59, D60, D61, D62, D63, D64, D65, D66, D67, D68, D69, D70, D71, D72, D73, D74, D75, D76, D77, D78, D79, D80, D81, D82, D83, D84, D85, D86, D87, D88, D89, D90, D91, D92, D93, D94, D95, D96, D97, D98, D99, D100.
- WINDOWS:** W1, W2, W3, W4, W5, W6, W7, W8, W9, W10, W11, W12, W13, W14, W15, W16, W17, W18, W19, W20, W21, W22, W23, W24, W25, W26, W27, W28, W29, W30, W31, W32, W33, W34, W35, W36, W37, W38, W39, W40, W41, W42, W43, W44, W45, W46, W47, W48, W49, W50, W51, W52, W53, W54, W55, W56, W57, W58, W59, W60, W61, W62, W63, W64, W65, W66, W67, W68, W69, W70, W71, W72, W73, W74, W75, W76, W77, W78, W79, W80, W81, W82, W83, W84, W85, W86, W87, W88, W89, W90, W91, W92, W93, W94, W95, W96, W97, W98, W99, W100.
- FIXTURES:** F1, F2, F3, F4, F5, F6, F7, F8, F9, F10, F11, F12, F13, F14, F15, F16, F17, F18, F19, F20, F21, F22, F23, F24, F25, F26, F27, F28, F29, F30, F31, F32, F33, F34, F35, F36, F37, F38, F39, F40, F41, F42, F43, F44, F45, F46, F47, F48, F49, F50, F51, F52, F53, F54, F55, F56, F57, F58, F59, F60, F61, F62, F63, F64, F65, F66, F67, F68, F69, F70, F71, F72, F73, F74, F75, F76, F77, F78, F79, F80, F81, F82, F83, F84, F85, F86, F87, F88, F89, F90, F91, F92, F93, F94, F95, F96, F97, F98, F99, F100.
- NOTES:**
  - 10'-0" x 10'-0" PATIO
  - 132'-0"
  - 16'-0"
  - 16'-0"
  - 10'-5"
  - 13'-0"
  - 14'-5"
  - 17'-0"
  - 8'-0"
  - 5'-0"
  - 2'-4 3/4"
  - 8'-0"
  - 5'-0"
  - 7'-0"
  - 3'-5"
  - 3'-2"
  - 1'-0"
  - 8'-0 1/4"
  - 8'-0 1/4"
  - 6'-6 3/4"
  - 12'-0"
  - 13'-0"
  - 10'-5"
  - 132'-0"
  - 16'-0"
  - 16'-0"
  - 10'-5"
  - 13'-0"
  - 14'-5"
  - 17'-0"
  - 8'-0"
  - 5'-0"
  - 2'-4 3/4"
  - 8'-0"
  - 5'-0"
  - 7'-0"
  - 3'-5"
  - 3'-2"
  - 1'-0"
  - 8'-0 1/4"
  - 8'-0 1/4"
  - 6'-6 3/4"
  - 12'-0"
  - 13'-0"
  - 10'-5"
  - 132'-0"
  - 16'-0"
  - 16'-0"
  - 10'-5"
  - 13'-0"
  - 14'-5"
  - 17'-0"
  - 8'-0"
  - 5'-0"
  - 2'-4 3/4"
  - 8'-0"
  - 5'-0"
  - 7'-0"
  - 3'-5"
  - 3'-2"
  - 1'-0"
  - 8'-0 1/4"
  - 8'-0 1/4"
  - 6'-6 3/4"
  - 12'-0"
  - 13'-0"
  - 10'-5"
  - 132'-0"
  - 16'-0"
  - 16'-0"
  - 10'-5"
  - 13'-0"
  - 14'-5"
  - 17'-0"
  - 8'-0"
  - 5'-0"
  - 2'-4 3/4"
  - 8'-0"
  - 5'-0"
  - 7'-0"
  - 3'-5"
  - 3'-2"
  - 1'-0"
  - 8'-0 1/4"
  - 8'-0 1/4"
  - 6'-6 3/4"
  - 12'-0"
  - 13'-0"
  - 10'-5"
  - 132'-0"
  - 16'-0"
  - 16'-0"
  - 10'-5"
  - 13'-0"
  - 14'-5"
  - 17'-0"
  - 8'-0"
  - 5'-0"
  - 2'-4 3/4"
  - 8'-0"
  - 5'-0"
  - 7'-0"
  - 3'-5"
  - 3'-2"
  - 1'-0"
  - 8'-0 1/4"
  - 8'-0 1/4"
  - 6'-6 3/4"
  - 12'-0"
  - 13'-0"
  - 10'-5"
  - 132'-0"
  - 16'-0"
  - 16'-0"
  - 10'-5"
  - 13'-0"
  - 14'-5"
  - 17'-0"
  - 8'-0"
  - 5'-0"
  - 2'-4 3/4"
  - 8'-0"
  - 5'-0"
  - 7'-0"
  - 3'-5"
  - 3'-2"
  - 1'-0"
  - 8'-0 1/4"
  - 8'-0 1/4"
  - 6'-6 3/4"
  - 12'-0"
  - 13'-0"
  - 10'-5"
  - 132'-0"
  - 16'-0"
  - 16'-0"
  - 10'-5"
  - 13'-0"
  - 14'-5"
  - 17'-0"
  - 8'-0"
  - 5'-0"
  - 2'-4 3/4"
  - 8'-0"
  - 5'-0"
  - 7'-0"
  - 3'-5"
  - 3'-2"
  - 1'-0"
  - 8'-0 1/4"
  - 8'-0 1/4"
  - 6'-6 3/4"
  - 12'-0"
  - 13'-0"
  - 10'-5"
  - 132'-0"
  - 16'-0"
  - 16'-0"
  - 10'-5"
  - 13'-0"
  - 14'-5"
  - 17'-0"
  - 8'-0"
  - 5'-0"
  - 2'-4 3/4"
  - 8'-0"
  - 5'-0"
  - 7'-0"
  - 3'-5"
  - 3'-2"
  - 1'-0"
  - 8'-0 1/4"
  - 8'-0 1/4"
  - 6'-6 3/4"
  - 12'-0"
  - 13'-0"
  - 10'-5"
  - 132'-0"
  - 16'-0"
  - 16'-0"
  - 10'-5"
  - 13'-0"
  - 14'-5"
  - 17'-0"
  - 8'-0"
  - 5'-0"
  - 2'-4 3/4"
  - 8'-0"
  - 5'-0"
  - 7'-0"
  - 3'-5"
  - 3'-2"
  - 1'-0"
  - 8'-0 1/4"
  - 8'-0 1/4"
  - 6'-6 3/4"
  - 12'-0"
  - 13'-0"
  - 10'-5"
  - 132'-0"
  - 16'-0"
  - 16'-0"
  - 10'-5"
  - 13'-0"
  - 14'-5"
  - 17'-0"
  - 8'-0"
  - 5'-0"
  - 2'-4 3/4"
  - 8'-0"
  - 5'-0"
  - 7'-0"
  - 3'-5"
  - 3'-2"
  - 1'-0"
  - 8'-0 1/4"
  - 8'-0 1/4"
  - 6'-6 3/4"
  - 12'-0"
  - 13'-0"
  - 10'-5"
  - 132'-0"
  - 16'-0"
  - 16'-0"
  - 10'-5"
  - 13'-0"
  - 14'-5"
  - 17'-0"
  - 8'-0"
  - 5'-0"
  - 2'-4 3/4"
  - 8'-0"
  - 5

# Empire Mgt. Co.

Residential Leasing  
Office: (315) 445-8990  
Email: [dcmuraco@empiremgtco.com](mailto:dcmuraco@empiremgtco.com)  
[www.empiremgtco.com](http://www.empiremgtco.com)



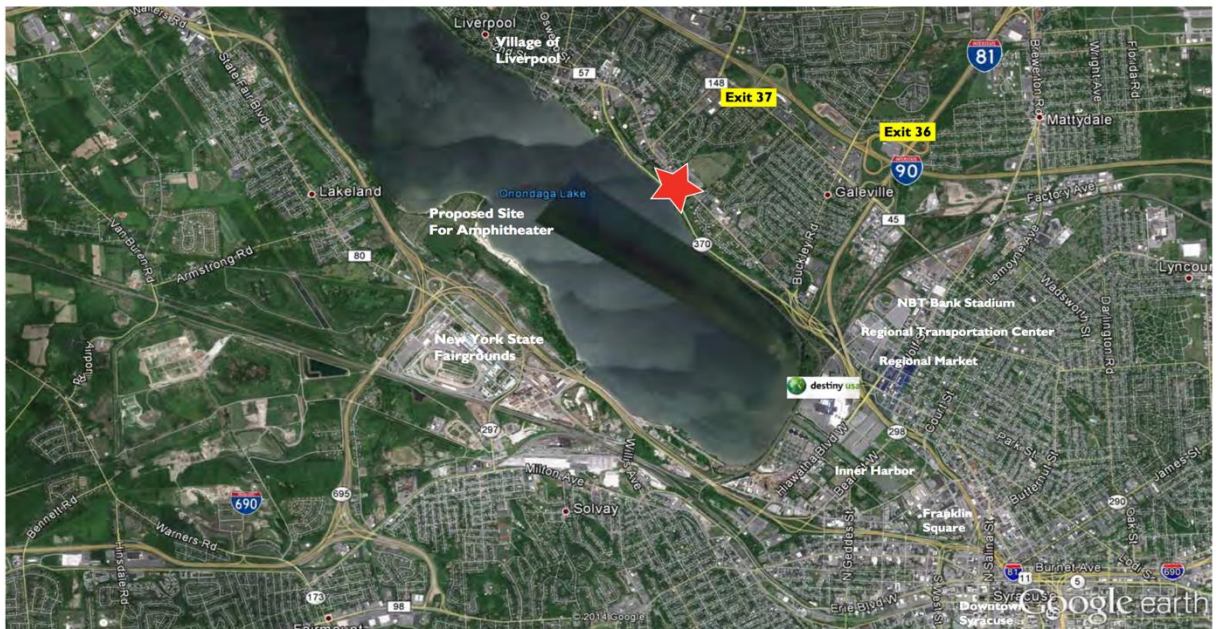
# SITE PLAN OVERHEAD DRAWING



## 629 OLD LIVERPOOL ROAD

### Location Map

SECTION III:  
LOCATION  
INFORMATION



David C. Muraco  
Office: (315) 445-8990  
Empire Management of CNY, Inc.  
112 S Burdick St. Fayetteville, NY 13066

**Empire  
Mgt. Co.**

Residential Leasing  
Office: (315) 445-8990  
Email: dcmuraco@empiremgtco.com  
www.empiremgtco.com