

THE RESIDENCES AT

# LEMOYNE MANOR

629 OLD LIVERPOOL ROAD  
LIVERPOOL, NY 13088

315-445-8990



**AVAILABLE - 3,234 SF**



**3,234 SF  
AVAILABLE**



**RETAIL 1: AVAILABLE - 3,234 SF**

**COMING SOON!**

**RETAIL 2: 86 CAFÉ - ASIAN HIBACHI, BAKERY & DESSERT**

No representation, warranty, or guarantee, expressed or implied or by operation of law, is made as to the accuracy, reliability, or completeness of this information. This material is submitted subject to errors, omissions, changes, prior sales or withdrawals without notice.

David C. Muraco - CEO  
Cell: 315-420-0735 Office: (315) 445-8990  
Email: dcmuraco@empiremtgco.com  
112 S Burdick St. Fayetteville, NY 13066

**Empire  
Mgt. Co.**

Louis D. Muraco - President  
Cell: 315-420-1959 Office: 315-445-8990  
Email: ldmuraco@empiremtgco.com  
www.empiremtgco.com

# MODERN LUXURY COMMUNITY

WORKOUT FACILITY, AND MORE. THIS WILL BE THE FIRST BUILDING TO OPEN IN SPRING 2025!

**BUILDING 1:** SCHEDULED TO OPEN SPRING 2025! (MIXED USE BUILDING)

**BUILDING 2:** SCHEDULED TO OPEN SPRING 2025!

**BUILDING 3:** SCHEDULED TO OPEN SPRING 2025!

**BUILDING 4:** SCHEDULED TO OPEN SPRING 2025!



## REAR PATIO/DECK OF MIXED USE BUILDING



David C. Muraco - CEO

Cell: 315-420-0735 Office: (315) 445-8990

Email: [dcmuraco@empiremgtco.com](mailto:dcmuraco@empiremgtco.com)

112 S Burdick St. Fayetteville, NY 13066

**Empire**  
Mgt. Co.

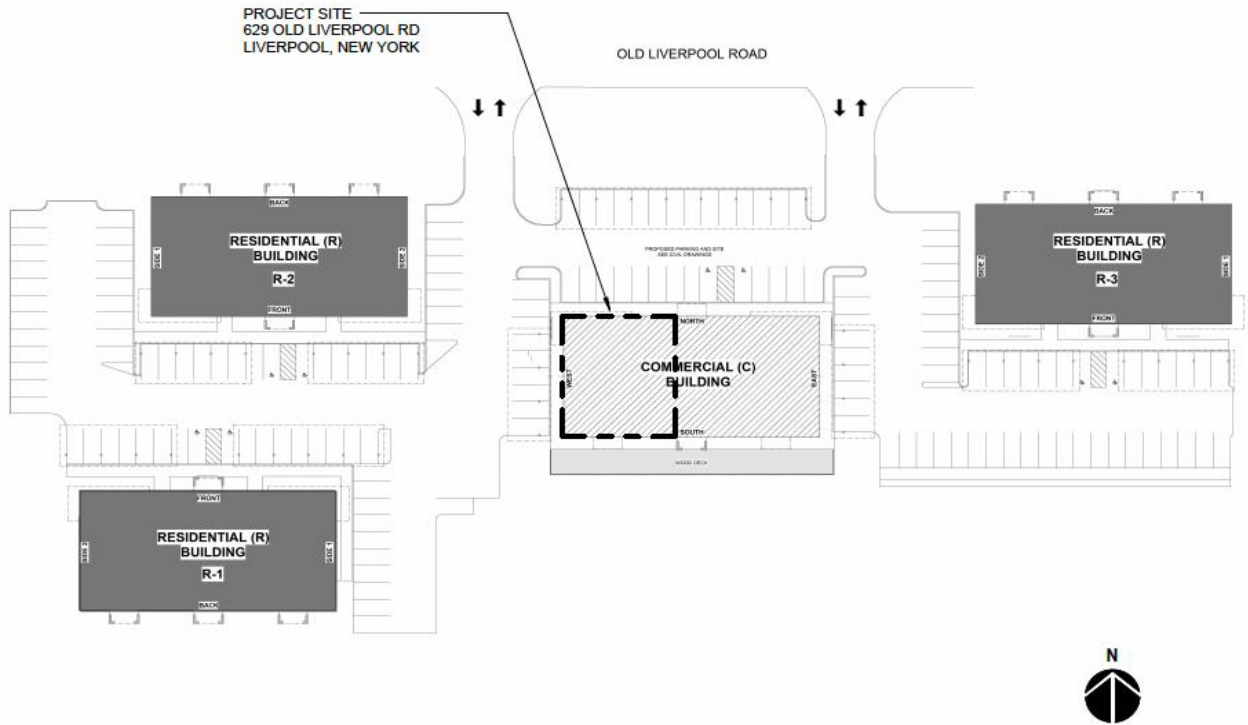
Louis D. Muraco - President

Cell: 315-420-1959 Office: 315-445-8990

Email: [ldmuraco@empiremgtco.com](mailto:ldmuraco@empiremgtco.com)

[www.empiremgtco.com](http://www.empiremgtco.com)

# EXTERIOR PHOTOGRAPHS



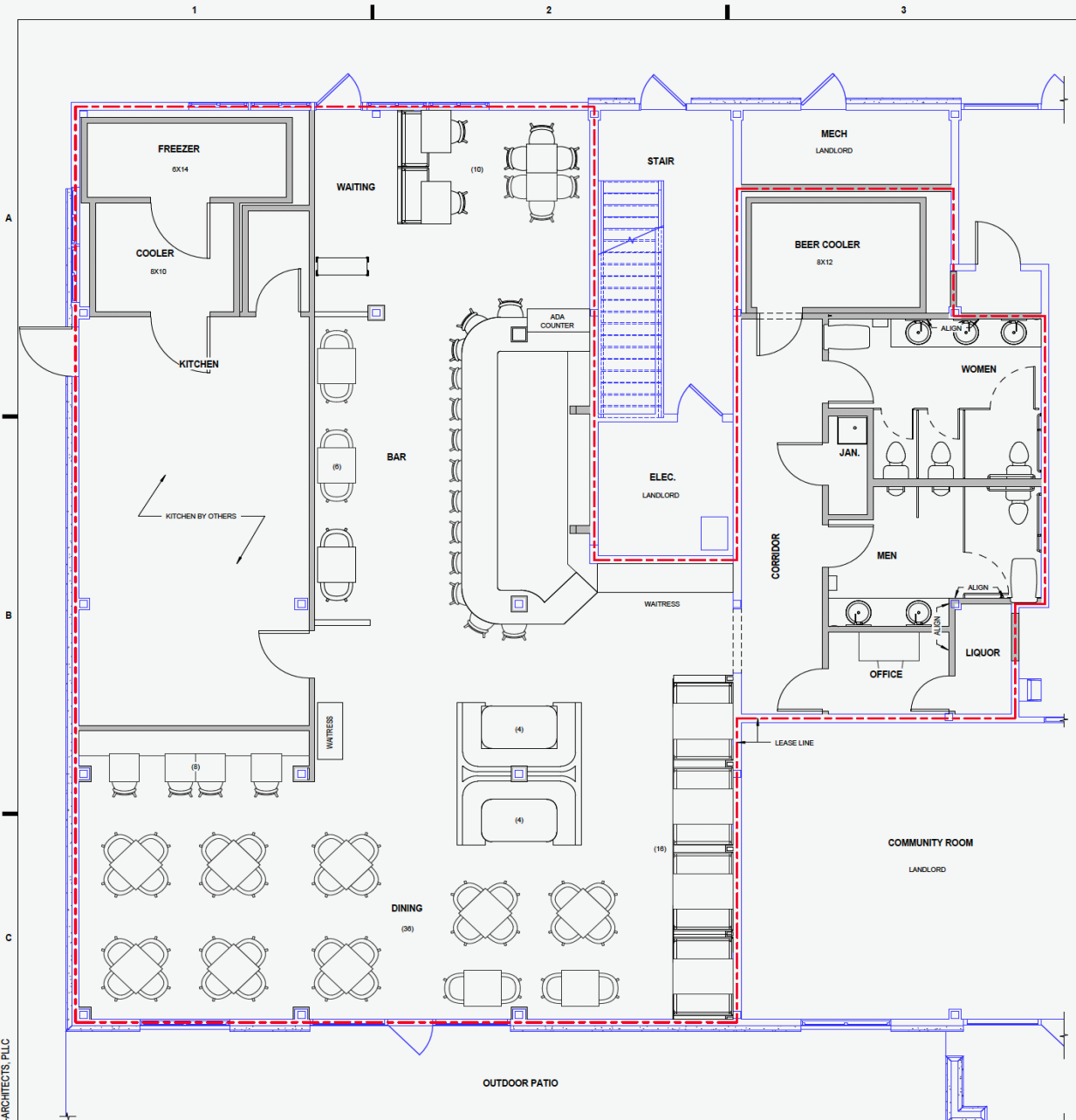
David C. Muraco - CEO  
Cell: 315-420-0735 Office: (315) 445-8990  
Email: [dcmuraco@empiremgtco.com](mailto:dcmuraco@empiremgtco.com)  
112 S Burdick St. Fayetteville, NY 13066

**Empire**  
Mgt. Co.

Louis D. Muraco - President  
Cell: 315-420-1959 Office: 315-445-8990  
Email: [ldmuraco@empiremgtco.com](mailto:ldmuraco@empiremgtco.com)  
[www.empiremgtco.com](http://www.empiremgtco.com)

# INTERIOR FLOOR PLANS

NOW LEASING!  
 CALL OUR OFFICE TO SCHEDULE SHOWING!  
 315-445-8990



NOTE: FOR INFORMATIONAL USE ONLY

C1 FIRST FLOOR (C) FURNITURE PLAN  
 A202 SCALE: 1/4" = 1'-0"

8/27/2024, 2:22:16 PM  
 © COPYRIGHT 2024, IN-ARCHITECTS, PLLC

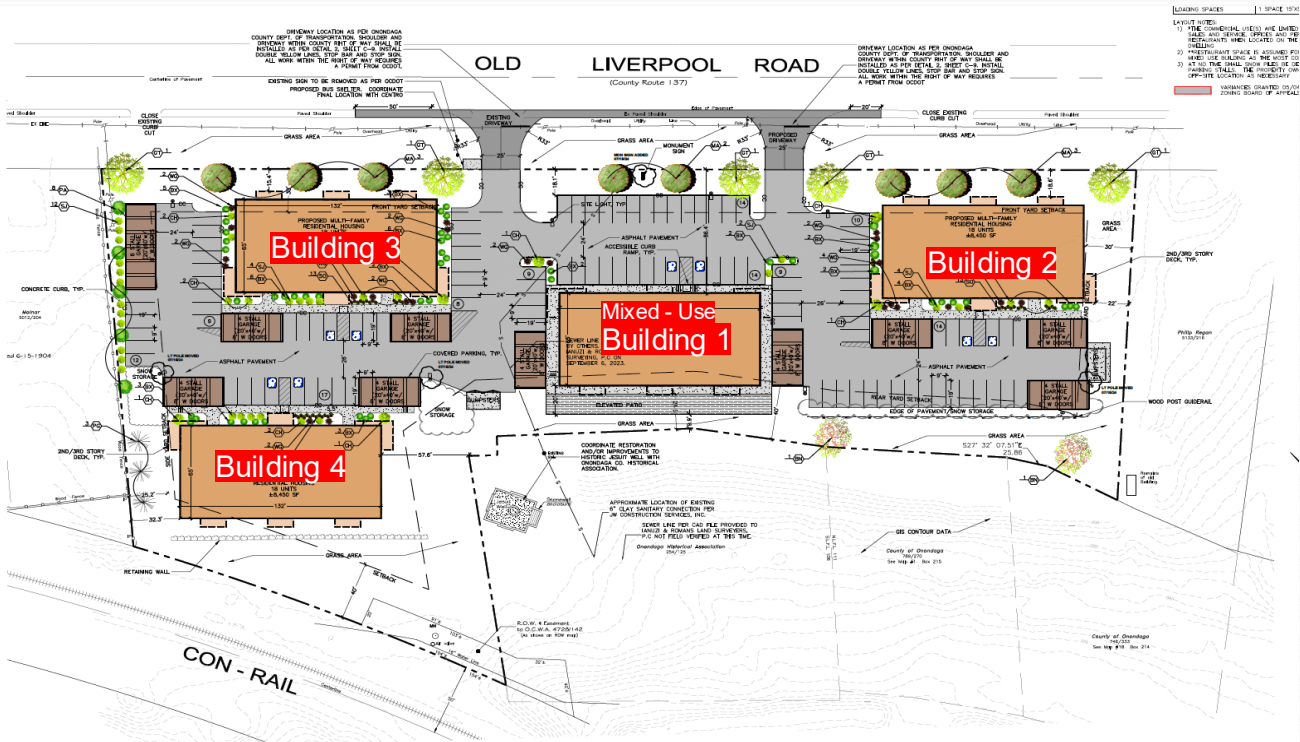
C4  
 A101

David C. Muraco - CEO  
 Cell: 315-420-0735 Office: (315) 445-8990  
 Email: [dcmuraco@empiremgtco.com](mailto:dcmuraco@empiremgtco.com)  
 112 S Burdick St. Fayetteville, NY 13066

**Empire**  
 Mgt. Co.

Louis D. Muraco - President  
 Cell: 315-420-1959 Office: 315-445-8990  
 Email: [ldmuraco@empiremgtco.com](mailto:ldmuraco@empiremgtco.com)  
[www.empiremgtco.com](http://www.empiremgtco.com)

# SITE PLAN OVERHEAD DRAWING



David C. Muraco - CEO  
 Cell: 315-420-0735 Office: (315) 445-8990  
 Email: dcmuraco@empiremgtco.com  
 112 S Burdick St. Fayetteville, NY 13066

**Empire  
Mgt. Co.**

Louis D. Muraco - President  
 Cell: 315-420-1959 Office: 315-445-8990  
 Email: ldmuraco@empiremgtco.com  
 www.empiremgtco.com

# SURROUNDING AREA MAP

