

THE RESIDENCES AT



629 OLD LIVERPOOL ROAD  
LIVERPOOL, NY 13088



**66 MODERN LUXURY APARTMENTS!**



**BRAND-NEW MIXED-USE LUXURY DEVELOPMENT**

**RESIDENTIAL: - RENTAL RATES STARTING AT \$2,400 PER MONTH**

**- Garage Parking**

**Apartments Ranging from 1,100 to 1,250 Square Feet**

- ❖ 66 Apartments in Elevator Equipped Buildings! 1<sup>st</sup>, 2<sup>nd</sup> and 3<sup>rd</sup> Floor Options
- ❖ Majority 2 Bedroom/2 Bathroom Apartments With a Mix of Large 2 Bedroom/1 Bathroom Layouts
- ❖ All Units Have Balconies
- ❖ Lake Views From Many of the Units
- ❖ ADA Adaptable

**Stainless Steel Appliances, Granite Countertops, Custom Cabinetry, LED Lighting, Elevator, Community Room, Workout Facility, Garages, and More!**

No representation, warranty, or guarantee, expressed or implied or by operation of law, is made as to the accuracy, reliability, or completeness of this information. This material is submitted subject to errors, omissions, changes, prior sales or withdrawals without notice.

David C. Muraco  
Office: (315) 445-8990  
Empire Management of CNY, Inc.  
112 S Burdick St. Fayetteville, NY 13066

**Empire  
Mgt. Co.**

Residential Leasing  
Office: (315) 445-8990  
Email: [dcmuraco@empiremgtco.com](mailto:dcmuraco@empiremgtco.com)  
[www.empiremgtco.com](http://www.empiremgtco.com)

# NOW LEASING!

## 66 MODERN LUXURY APARTMENTS

CALL US AT 315-445-8990 OR EMAIL [DCMURACO@EMPIREMGT.CO.COM](mailto:DCMURACO@EMPIREMGT.CO.COM)

### Property Highlights Continued:

#### ❖ **COMING SOON!** **RESTAURANT & COFFEE HOUSE**

#### ❖ **Shopping Centers**

Shoppers will appreciate The Residences at LeMoyne Manor Apartments proximity to Liverpool Plaza, Old Liverpool, and Lakeshore Drive-In Shopping Plaza. Liverpool Plaza is **0.3 miles** away, and Old Liverpool is within a **6-minute walk**.

#### ❖ **Parks and Recreation**

Recreational activities near The Residences at LeMoyne Manor Apartments are plentiful. Discover 3 parks within **4.4 miles**, including Erie Canal Museum, Rubenstein Museum of Science & Technology, and Rosamond Gifford Zoo.

#### ❖ **Airports**

Living in Liverpool provides easy access to Syracuse Hancock International, located just **11 minutes** from The Residences at LeMoyne Manor Apartments.

**\*\*Sidewalks will be newly installed on our side of Old Liverpool Road providing connection to adjacent properties and will tie into Loop the Lake Trail on Onondaga Lake Parkway.\*\***



No representation, warranty, or guarantee, expressed or implied or by operation of law, is made as to the accuracy, reliability, or completeness of this information. This material is submitted subject to errors, omissions, changes, prior sales or withdrawals without notice.

David C. Muraco  
Office: (315) 445-8990  
Empire Management of CNY, Inc.  
112 S Burdick St. Fayetteville, NY 13066

**Empire**  
Mgt. Co.

Residential Leasing  
Office: (315) 445-8990  
Email: [dcmuraco@empiremgtco.com](mailto:dcmuraco@empiremgtco.com)  
[www.empiremgtco.com](http://www.empiremgtco.com)



# MODERN LUXURY COMMUNITY

WORKOUT FACILITY, AND MORE. THIS WILL BE THE FIRST BUILDING TO OPEN IN SUMMER 2024!

**BUILDING 1:** SCHEDULED TO OPEN FALL 2024! (MIXED USE BUILDING)

**BUILDING 2:** SCHEDULED TO OPEN FALL 2024!

**BUILDING 3:** SCHEDULED TO OPEN FALL 2024!

**BUILDING 4:** SCHEDULED TO OPEN FALL 2024!

ONONDAGA LAKE VIEWS

Commercial  
MU- Building 1

Building 4

Building 3

Building 2

OLD LIVERPOOL ROAD

## REAR PATIO/DECK OF MIXED USE BUILDING

David C. Muraco  
Office: (315) 445-8990  
Empire Management of CNY, Inc.  
112 S Burdick St. Fayetteville, NY 13066

**Empire**  
Mgt. Co.

Residential Leasing  
Office: (315) 445-8990  
Email: [dcmuraco@empiremgtco.com](mailto:dcmuraco@empiremgtco.com)  
[www.empiremgtco.com](http://www.empiremgtco.com)



# EXTERIOR PHOTOGRAPHS

MIXED USE BUILDING  
12 APARTMENTS (FLOORS 2 & 3)  
2 RETAIL SPACES LEFT AND RIGHT OF MAIN ENTRANCE



## RESIDENTIAL BUILDING

18 APARTMENTS ( 6 PER FLOOR)



David C. Muraco  
Office: (315) 445-8990  
Empire Management of CNY, Inc.  
112 S Burdick St. Fayetteville, NY 13066

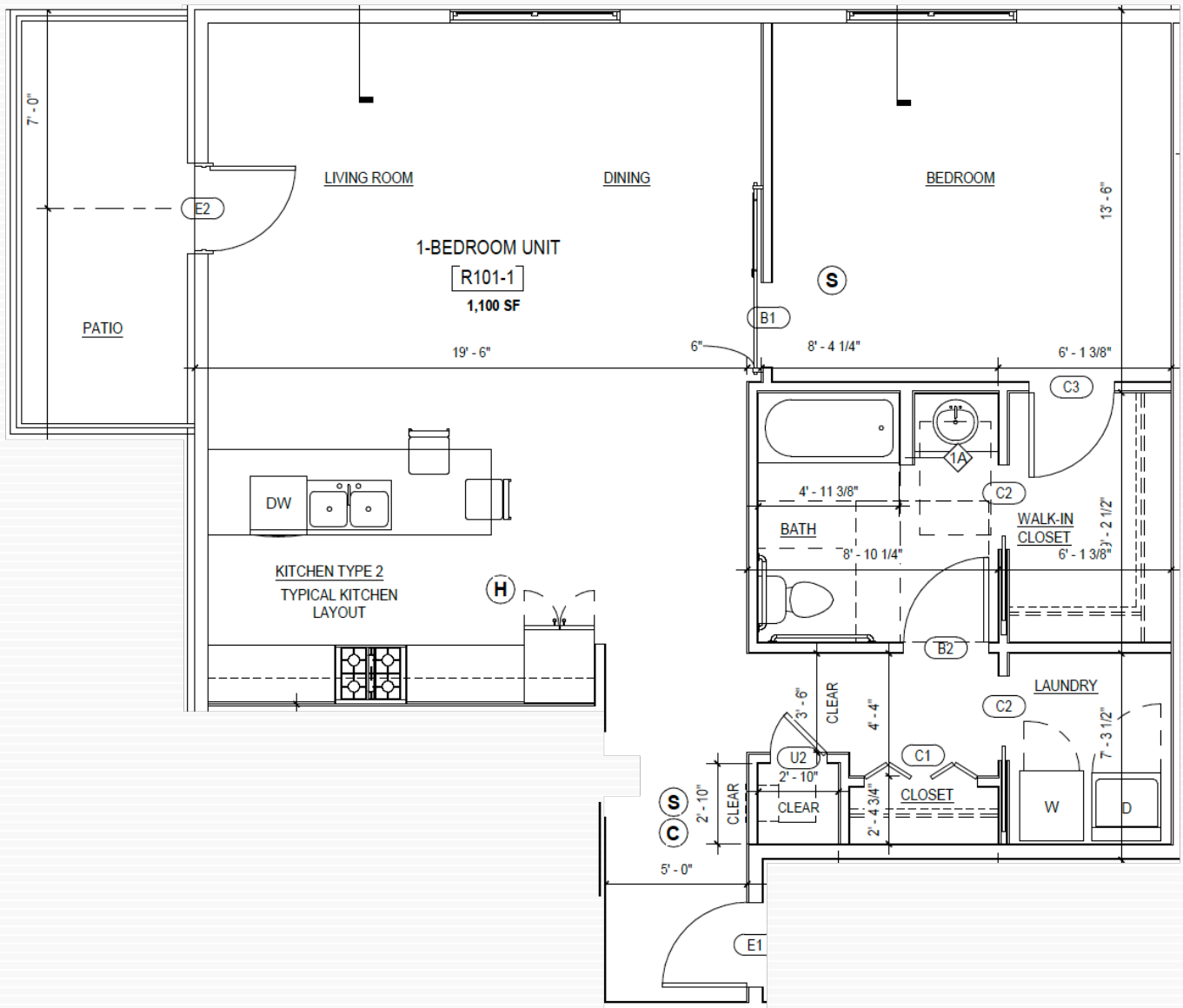
**Empire**  
Mgt. Co.

Residential Leasing  
Office: (315) 445-8990  
Email: [dcmuraco@empiremgtco.com](mailto:dcmuraco@empiremgtco.com)  
[www.empiremgtco.com](http://www.empiremgtco.com)

# INTERIOR APARTMENT LAYOUTS

CALL 315-445-8990 TO RESERVE YOUR  
APARTMENT TODAY!

## 1 Bedroom / 1 Bathroom Floor Plan



David C. Muraco  
Office: (315) 445-8990  
Empire Management of CNY, Inc.  
112 S Burdick St. Fayetteville, NY 13066

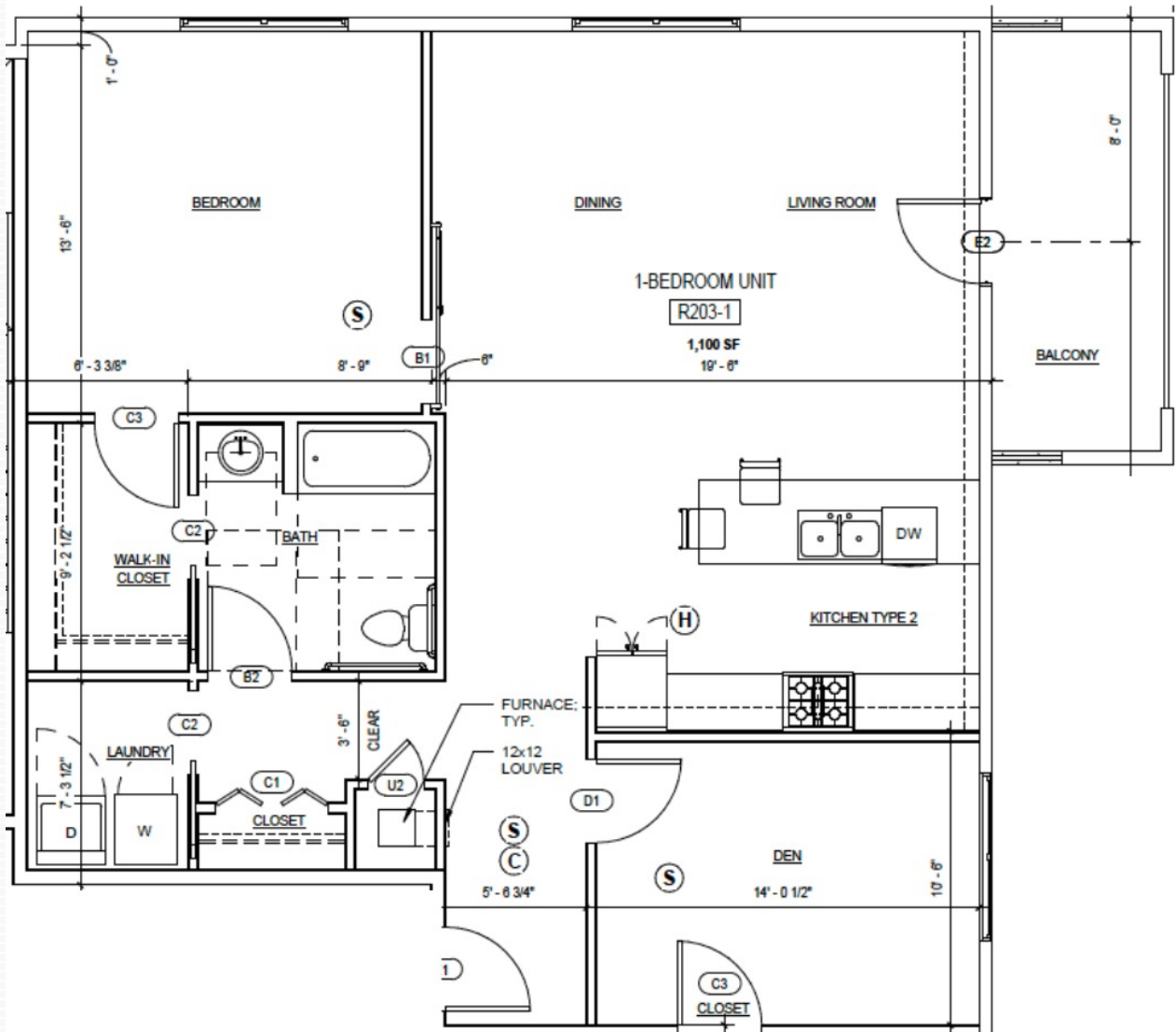
**Empire**  
Mgt. Co.

Residential Leasing  
Office: (315) 445-8990  
Email: dcmuraco@empiremgtco.com  
www.empiremgtco.com

# INTERIOR APARTMENT LAYOUTS

CALL 315-445-8990 TO RESERVE YOUR  
APARTMENT TODAY!

## 2 Bedroom / 1 Bathroom Floor Plan



David C. Muraco  
Office: (315) 445-8990  
Empire Management of CNY, Inc.  
112 S Burdick St. Fayetteville, NY 13066

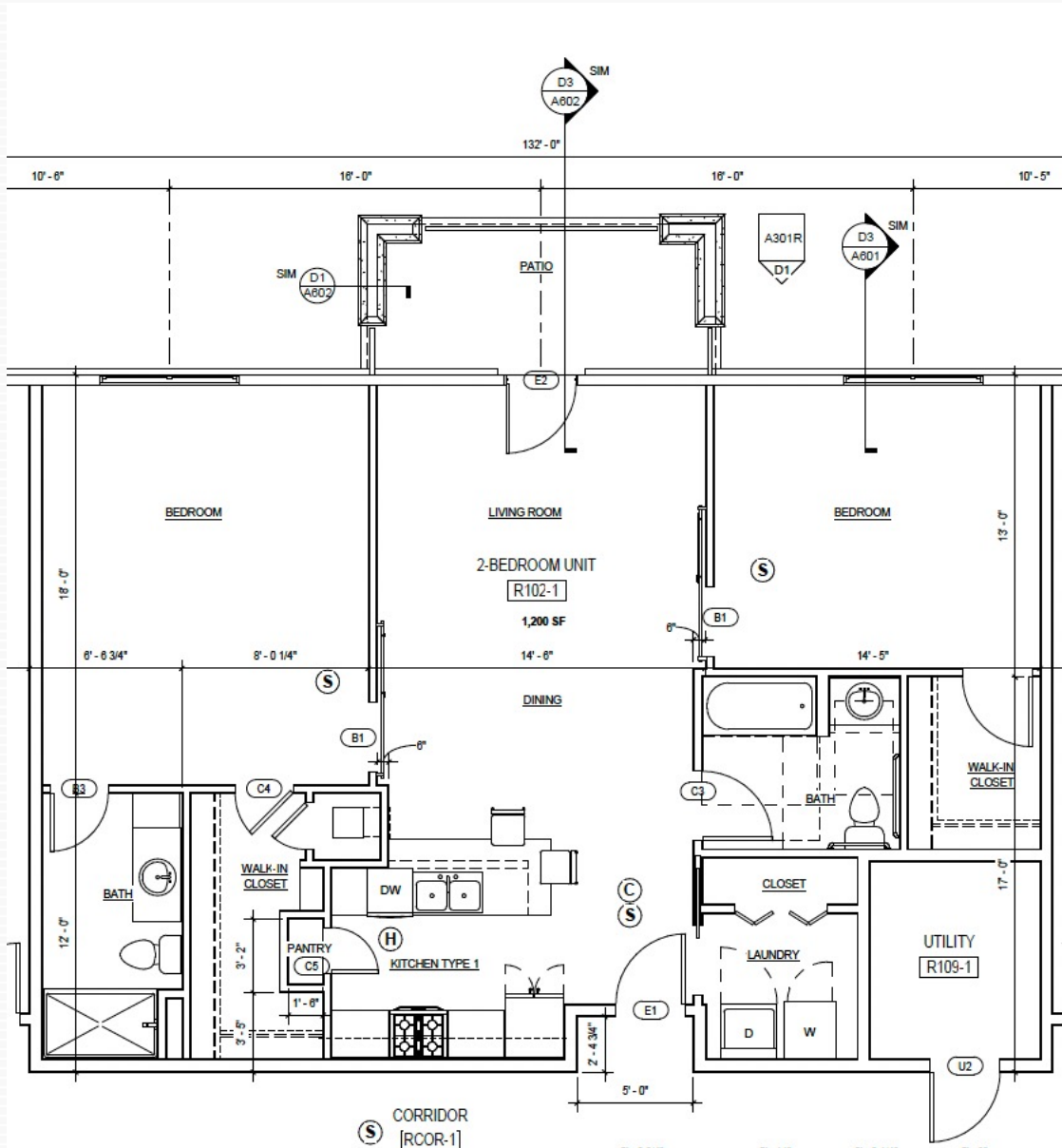
**Empire**  
Mgt. Co.

Residential Leasing  
Office: (315) 445-8990  
Email: [dcmuraco@empiremgtco.com](mailto:dcmuraco@empiremgtco.com)  
[www.empiremgtco.com](http://www.empiremgtco.com)

# INTERIOR APARTMENT LAYOUTS

CALL 315-445-8990 TO RESERVE YOUR  
APARTMENT TODAY!

## 2 Bedroom / 2 Bathroom Floor Plan



David C. Muraco  
Office: (315) 445-8990  
Empire Management of CNY, Inc.  
112 S Burdick St. Fayetteville, NY 13066

**Empire**  
Mgt. Co.

Residential Leasing  
Office: (315) 445-8990  
Email: dcmuraco@empiremgtco.com  
www.empiremgtco.com



DRIVEWAY LOCATION AS PER ONONDAGA COUNTY DEPT. OF TRANSPORTATION. SHOULDER AND DRIVEWAY WITHIN COUNTY RHT OF WAY SHALL BE INSTALLED AS PER DETAIL 2, SHEET C-9. INSTALL DOUBLE YELLOW LINES, STOP BAR AND STOP SIGN. ALL WORK WITHIN THE RIGHT OF WAY REQUIRES A PERMIT FROM CDDOT.

