

For LEASE!

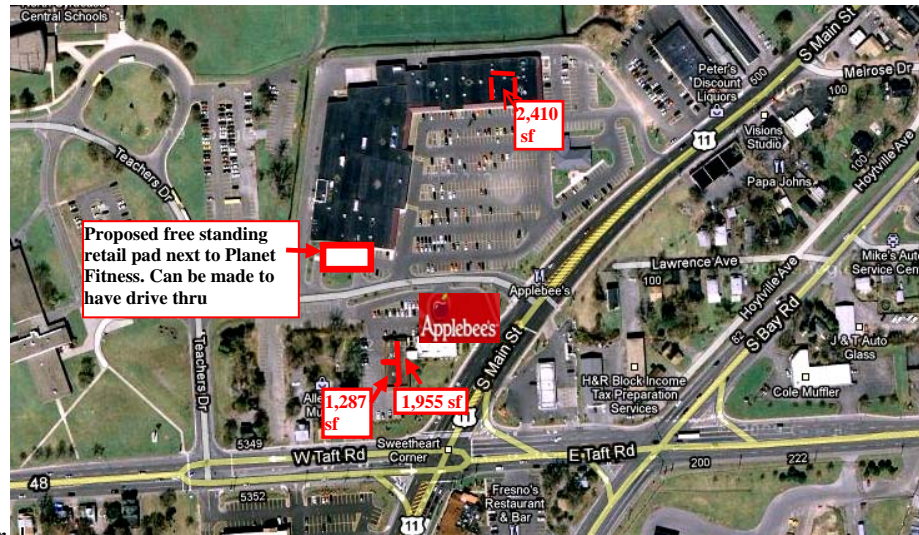
Updated 11/5/09

Attention Brokers: Full commission paid, brokers protected.

Approx sq ft available 1,287-2,410

Sweetheart Plaza

628 South Main Street, North Syracuse, New York



Current Tenants: Planet Fitness, Thrifty Shopper, Maines Paper & Food, Peter's Liquors, China Wok, Family Dollar, Solar Nails, Comix Zone, Wells Fargo, K-9 Dog Wash, Solvay Bank, Goldwell, Applebees, Dance studio

Property details:

- Out parcel located at the corner of Taft Rd. & South Main Street
- Convenient to major highways and airport
- Out parcel has front & back signage exposure

LEASING details:

Depending on size base rent starting at \$12.00 per sq.ft., net common area, taxes, insurance = \$2.86 per sq.ft.



For additional information, contact:

Empire Management Company, Inc.

4306 East Genesee Street, Dewitt, New York 13214

Phone: (315) 445-8990 * Fax: (315) 445-7977

Website: www.empiremgtco.com

Email: empireny@twcny.rr.com or dcmuraco@twcny.rr.com

No representation, warranty or guarantee, expressed or implied or by operation of law, is made as to the accuracy, reliability, or completeness of this information. This material is submitted subject to errors, omissions, changes, prior sales or withdrawals without notice. Commission amount subject to change depending on lease rental amount/term and sale price. All parties agree to form a separate written commission agreement.

